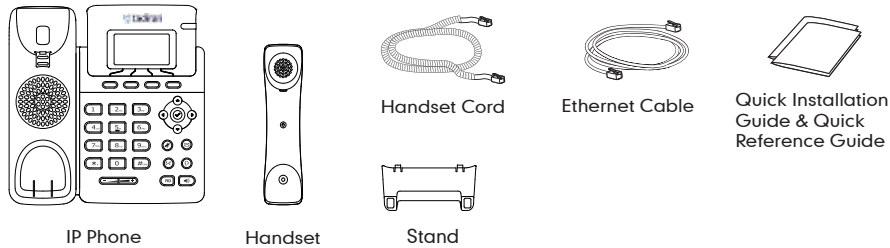


## Packaging Contents

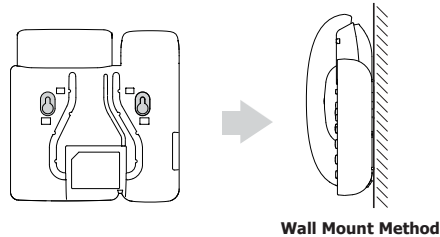
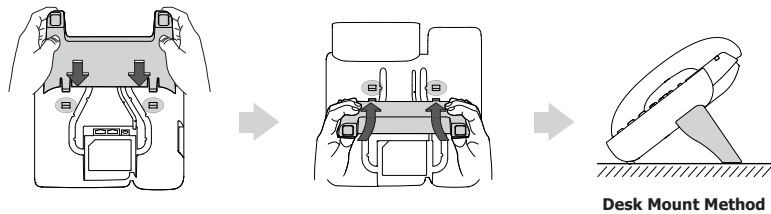
The following items are included in your package. If you find anything missing, contact your system administrator.



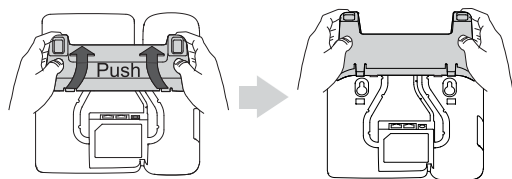
## Assembling the Phone

### 1. Attach and detach the stand, as shown below:

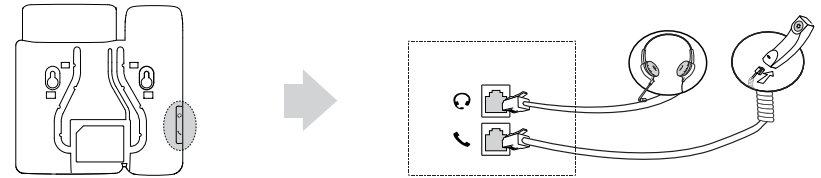
#### a) Attach the stand:



#### b) Detach the stand:



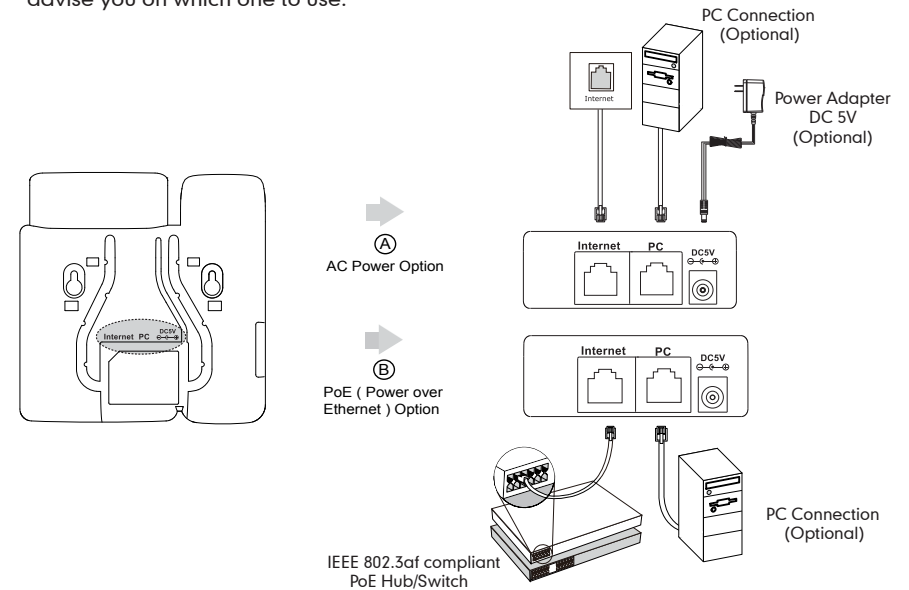
### 2. Connect the handset and optional headset, as shown below:



**Note:** The headset should be purchased separately.

### 3. Connect the network and power, as shown below:

You have two options for network and power connections. Your system administrator will advise you on which one to use.



**Note:** PoE is only applicable to the SIP-T19P IP phone. If inline power (PoE) is provided, you don't need to connect the power adapter. Make sure the Ethernet cable and hub/switch are PoE compliant.

## Startup

After the IP phone is connected to the network and supplied with power, it automatically begins the initialization process. After startup, the phone is ready for use. See your system administrator for advanced configuration options.

Welcome  
Initializing... please wait



# Enterprise IP Phone

## SIP-T19P



## Quick Installation Guide